

# Instructions for Use of:

## No. 1A AUTOGRAPHIC KODAK JUNIOR

(R. R. and MENISCUS LENS)

### To Open The Camera (do not force the camera open)

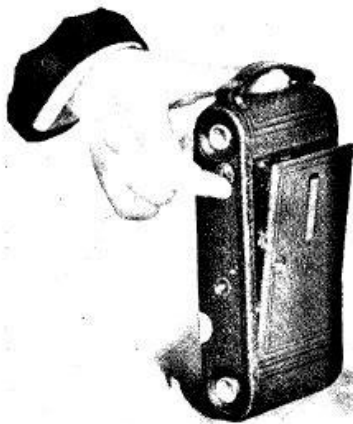


FIG. I.  
*Opening the Front.*

I. Press the concealed button, as shown in Fig. I, and push down the bed of camera to the limit of motion.



The Arm Locks will click into position

## Extending the Bellows (Be firm but do not use force)



FIG. II.

*Extending the Bellows and Focusing.*

II. Grasp the springs at bottom of front board, and pull out front to the point nearest the estimated distance of *principal object* to be photographed in feet. Fig. II.



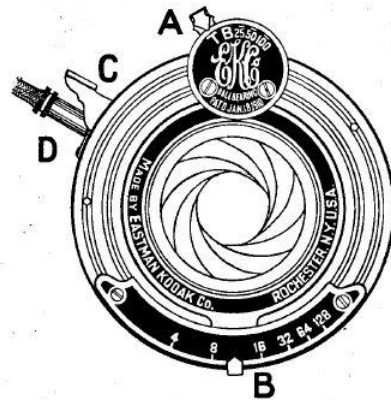
The focusing is achieved by locking the bellows movement into the appropriate position on the focus plate.

There are several things that can be demonstrated with this camera.

### 1. How the amount of light into the camera is controlled

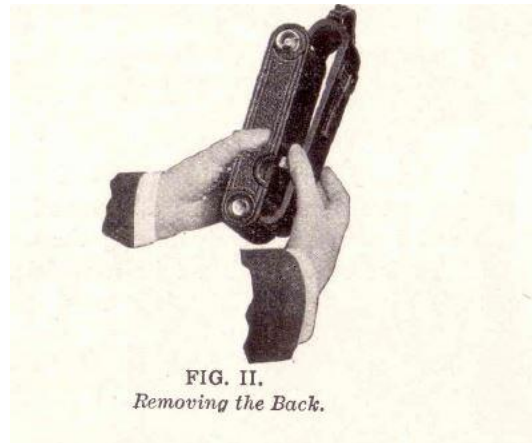
Looking directly into the lens – operate the exposure  
Lever “B”

The IRIS can be seen to open (at 4) and close (at 64).



## 2. Different methods of taking Pictures

Remove the back of the camera:



Lift out the opaque plastic sheet.

You can now look at the back of the lens

Set lever B to "4" – wide open

Set lever A to "B" - Time Exposure Mode

While looking into the back of the camera press hold and then release Lever C to open and close the shutter.

Set lever A to 25 (25<sup>th</sup> of a second) and press C again.

This short burst of light is all that was needed to expose the film and take a picture.

The film was only black and white and produced a transparent negative image which had then, through another light exposure

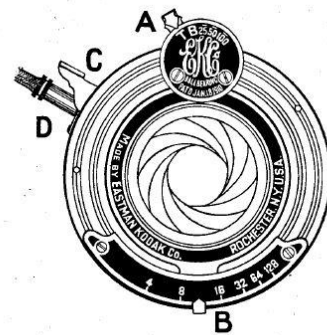
process be "printed" on photographic paper to produce a black and white positive image photograph.

Replace the opaque plastic sheet and set lever A to "T". Point the camera looking to the outdoors (bright light). Press lever "C" – the shutter will open and stay open. Look at the picture on the opaque plastic sheet (it is difficult to see) – this is the image that would be on the film in the camera.

Note that it is upside down and back to front.

Press "C" to close the shutter. Replace the back of the camera.

Look through the view finder – it is rudimentary and difficult to use accurately.





**Positive Image**



**Negative Image**

## **Closing the Camera (do not use force to close the camera)**

Ensure that the view finder is in the vertical position.

Close any stands that are open.

Carefully release and slide the bellows back into the casing – be careful with the viewfinder it folds up as the camera is pushed back into the casing.

Release the arm locks and clip the case closed.